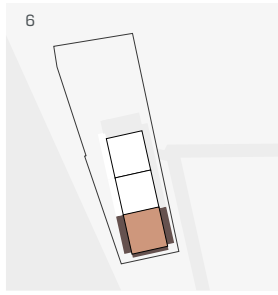


Floors 6-7  
 Flat 21 | Penthouse Duplex  
 114 sqm / 1227 sqft  
 3 Bedrooms  
 2 Bathrooms  
 1 Juliet Balcony  
 1 Balcony  
 1 Terrace



- 7
- 6
- 5
- 4
- 3
- 2
- 1
- GF



Room	Metres W x L	Feet W x L
Living+Dining+Kitchen	5.1 x 8.1	17 x 27
Bedroom 1	4.7 x 3.2	15 x 10
Bedroom 2	4.0 x 3.1	13 x 10
Bedroom 3	3.6 x 3.8	12 x 12
<b>Total</b>	<b>114 sqm</b>	<b>1227 sqft</b>
Balcony 2	15.4 sqm	166 sqft
Terrace	28 sqm	301 sqft



All measurements are approximate and are taken at maximum widths and lengths of rooms. Plans are drawn to scale at a design phase and may vary during build. Kitchens and wardrobes sizes and layouts may differ to those shown. Furniture layouts are indicative only (where they appear). All total sqft and sqm are gross measurements. Window styles and positions may vary. Floorplans are not to scale.