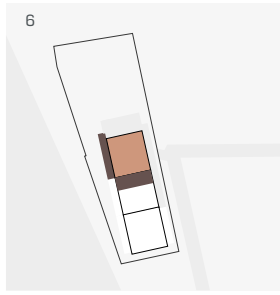


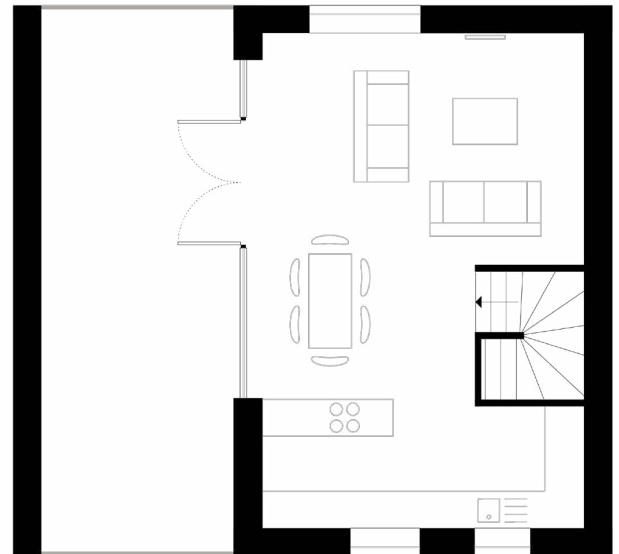
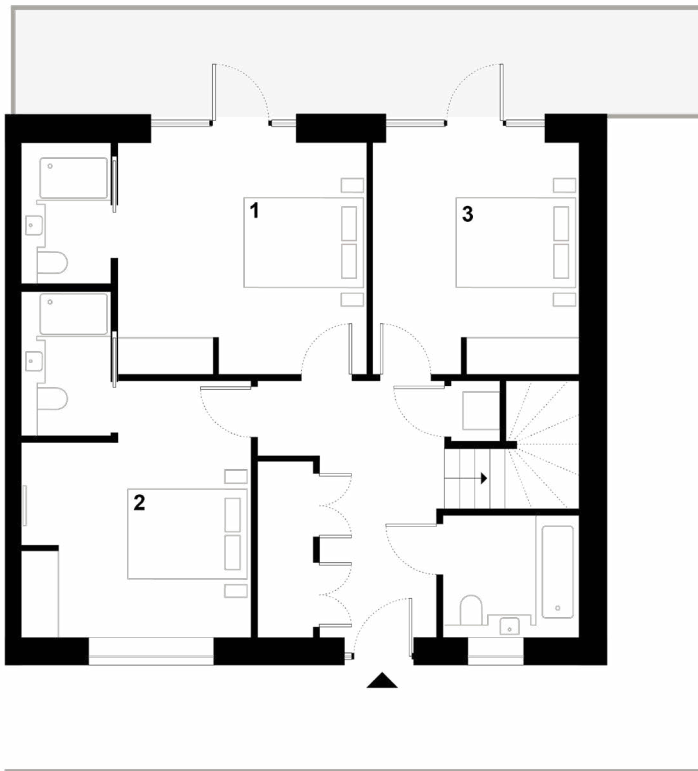
Floors 6-7  
 Flat 23 | Penthouse Duplex  
 116 sqm / 1249 sqft  
 3 Bedrooms  
 2 Bathrooms  
 1 Balcony  
 1 Terrace



- 7
- 6
- 5
- 4
- 3
- 2
- 1
- GF



Room	Metres W x L	Feet W x L
Living+Dining+Kitchen	5.2 x 8.1	17 x 27
Bedroom 1	3.9 x 3.8	12 x 13
Bedroom 2	3.7 x 4.2	12 x 14
Bedroom 3	3.4 x 3.7	11 x 12
<b>Total</b>	<b>116 sqm</b>	<b>1249 sqft</b>
Balcony	19.1 sqm	206 sqft
Terrace	24 sqm	258 qft



All measurements are approximate and are taken at maximum widths and lengths of rooms. Plans are drawn to scale at a design phase and may vary during build. Kitchens and wardrobes sizes and layouts may differ to those shown. Furniture layouts are indicative only (where they appear). All total sqft and sqm are gross measurements. Window styles and positions may vary. Floorplans are not to scale.